

---

# Missoula Construction Projects

2026–2030

# Missoula is building!

---

Missoula is entering a once-in-a-generation period of infrastructure development. Over the next several years, the City of Missoula, Montana Department of Transportation (MDT), Missoula County, and private partners will complete a series of coordinated projects to improve safety, access, and mobility across downtown and surrounding neighborhoods.

Keep scrolling for maps of affected areas and a project timeline.

# Map of Projects

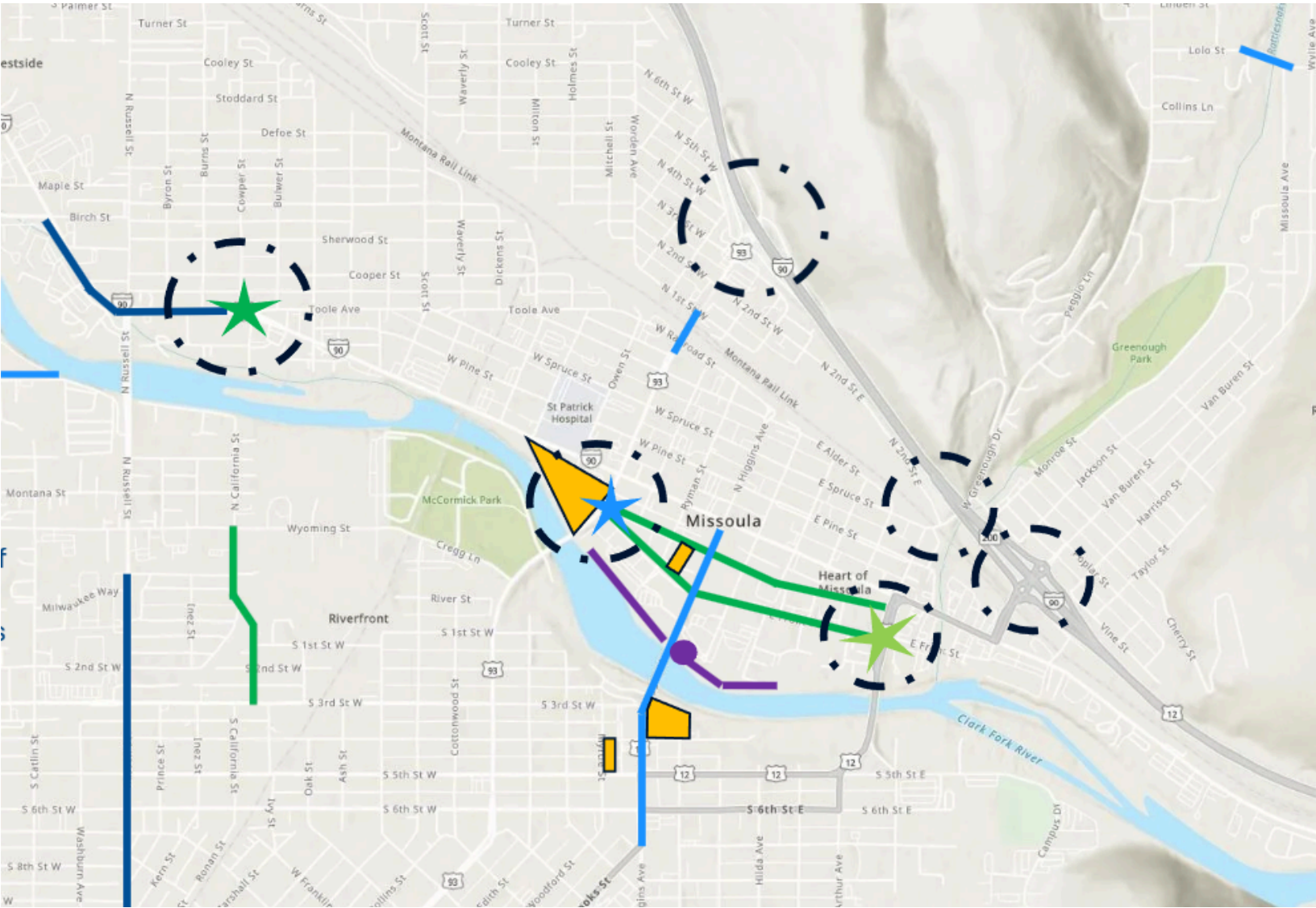
- 2026
- 2027
- 2028



- 2029 - 2030
- Dev Project

# Map of Projects

- 2026
- 2027
- 2028



- 2029 - 2030
- Dev Project



Areas of Traffic Impacts



2026

- Safety, Access, and Mobility Project (SAM): Riverfront Trails + Ramp (City)
- Pavement Preservation: Toole/Spruce/Madison, S 3<sup>rd</sup> St

Construction Overview 2026 – 2030 (continued on following slides)

- SAM: Higgins (City)
- Front/Main/Orange Intx (City)
- Orange St Underpass (MDT)
- Lolo St Bridge Replacement (County)
- Private Dev starts\*: Riverfront Triangle, Howards Apt, Myrtle St
- Utilities: N 4<sup>th</sup>, Woodford, & Clay Street water

2027



2028

- SAM: Front/Madison Intx (City)
- SAM: Front/Main Conversion (City)
- Broadway/Toole/California (City/MDT)
- California St (City)
- River Road (City)

- SAM: Signal Optimization (City)
- Russell St (MDT/City)

2029

# HIGGINS WATERFRONT

2030

- Russell St (MDT/City)

\*Other Development Projects:

- Higgins Waterfront (Missoulian)
- Sawmill District
- California St/River Rd Projects

# For questions or more information, contact:

---

**Aaron Wilson**

Planning Manager  
City of Missoula  
Public Works & Mobility

 406-552-6668

 [WilsonA@ci.missoula.mt.us](mailto:WilsonA@ci.missoula.mt.us)

 [ci.missoula.mt.us/403/public-works-mobility](http://ci.missoula.mt.us/403/public-works-mobility)

**Megan McMeekin**

Senior Project Manager  
City of Missoula  
Public Works & Mobility

 406-531-1619

 [McMeekinM@ci.missoula.mt.us](mailto:McMeekinM@ci.missoula.mt.us)

 [ci.missoula.mt.us/403/public-works-mobility](http://ci.missoula.mt.us/403/public-works-mobility)

**Joel Boucher**

Project Development Engineer  
Montana Department of Transportation  
Missoula District

 406-544-5802

 [joboucher@mt.gov](mailto:joboucher@mt.gov)

[www.mdt.mt.gov](http://www.mdt.mt.gov)